

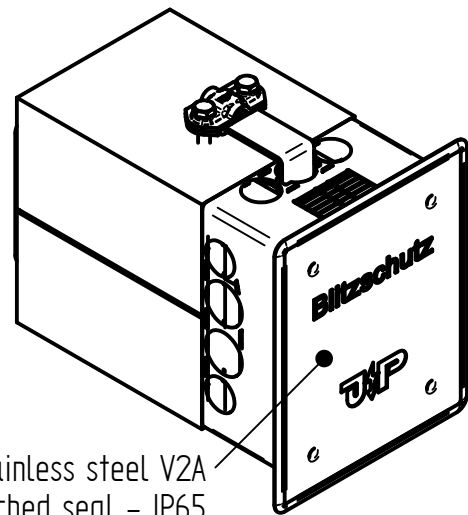
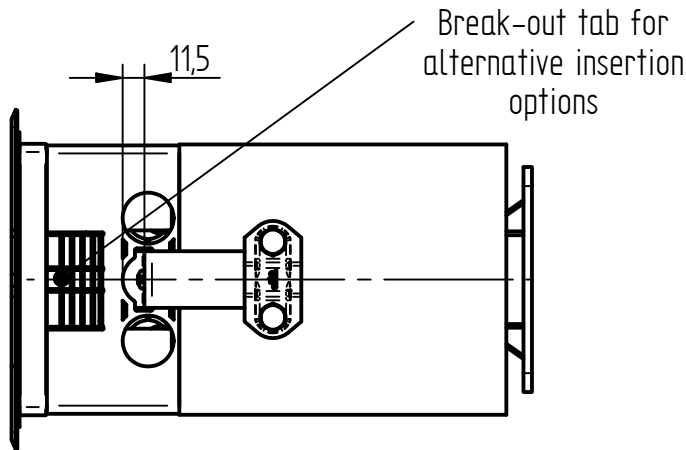
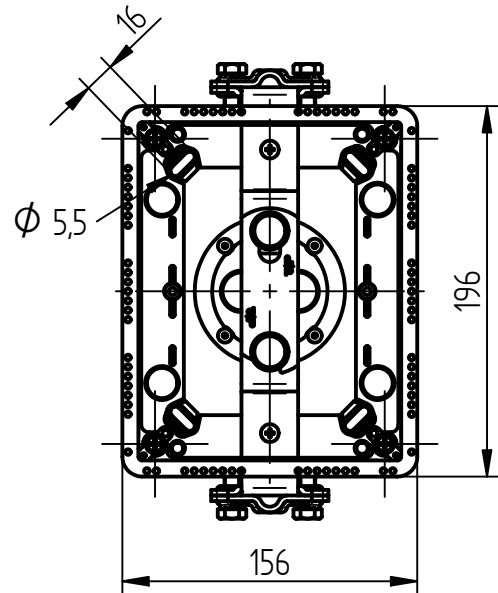
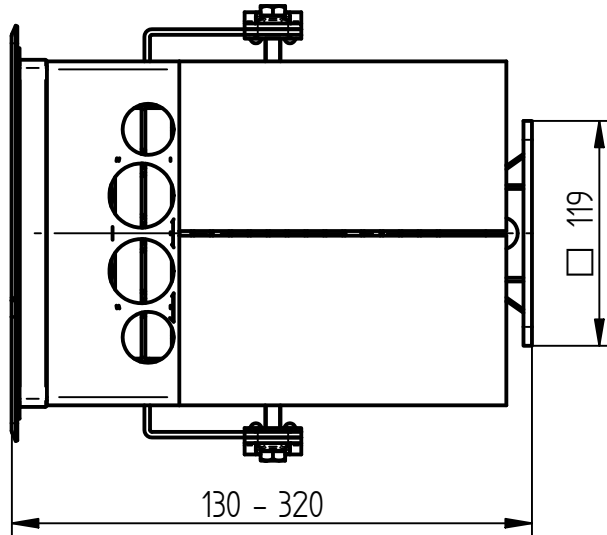
# Product Specification

**Ord.-No.:** 111 587 / E0680268



**Specification:** Test joint box for ETIC-systems  
130-320mm mounting depth, with test joint

**Performance:** Adjustable test joint box with spacer for external thermal insulation composite systems.



Cover stainless steel V2A with attached seal - IP65

Material of box	PC
Material of test joint	Stainless steel V2A
Material of spacer	PP
Material of cover	Stainless steel V2A, incl. neoprene seal
Colour	grey, RAL 7035
Dimensions of box	196 x 156 mm
Dimensions of spacer	119 x 119 x 200 mm
Dimensions of cover	220 x 180 mm
Fit of test joint	2x Ø 8-10 mm/fl. 30 mm
Installation depth	130 - 320 mm, infinitely variable
Temperature range	with test joint
Weight	1,52 kg
Packing unit	1 unit