

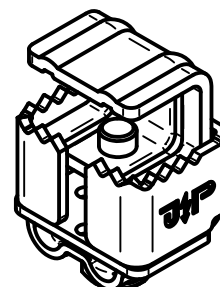
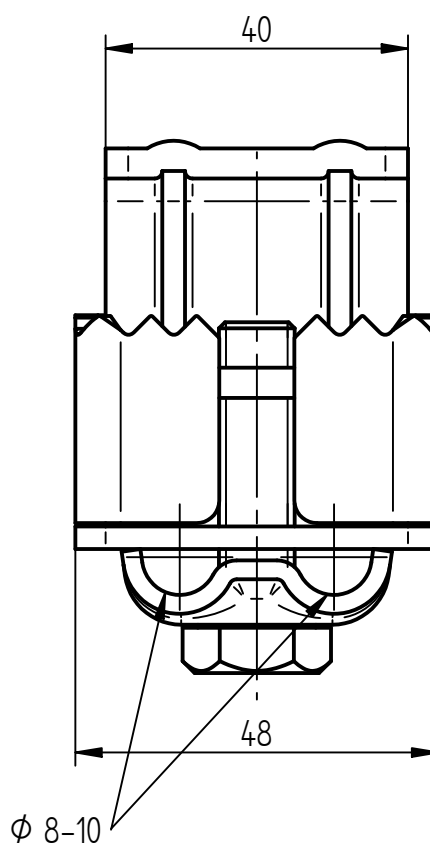
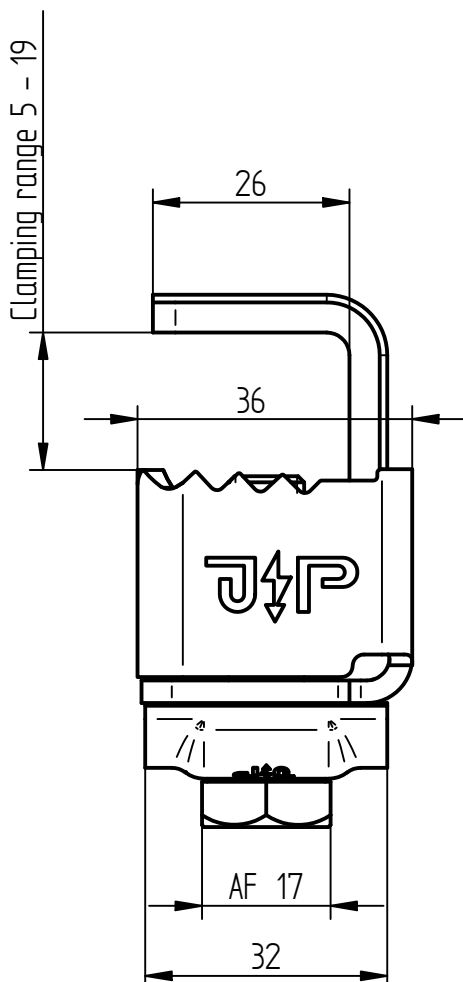
Product Specification

Ord.-No.: 111 887 / E0683601

Specification: Terminal clamp, clamping range 5-19 mm
V2A, with clamping jaw Ø 8-10 mm



Performance: Terminal clamp (heavy-duty type) according to DIN EN 62561-1 with clamping jaw for the connection of round conductors to steel constructions.



Material	Stainless steel V2A
Clamping range	5-19 mm
Fit	Ø 8-10 mm
Screw	Hexagon bolt M10, stainless steel V2A
Weight	258 g
Standard reference	DIN EN 62561-1
Packing unit	25 units